

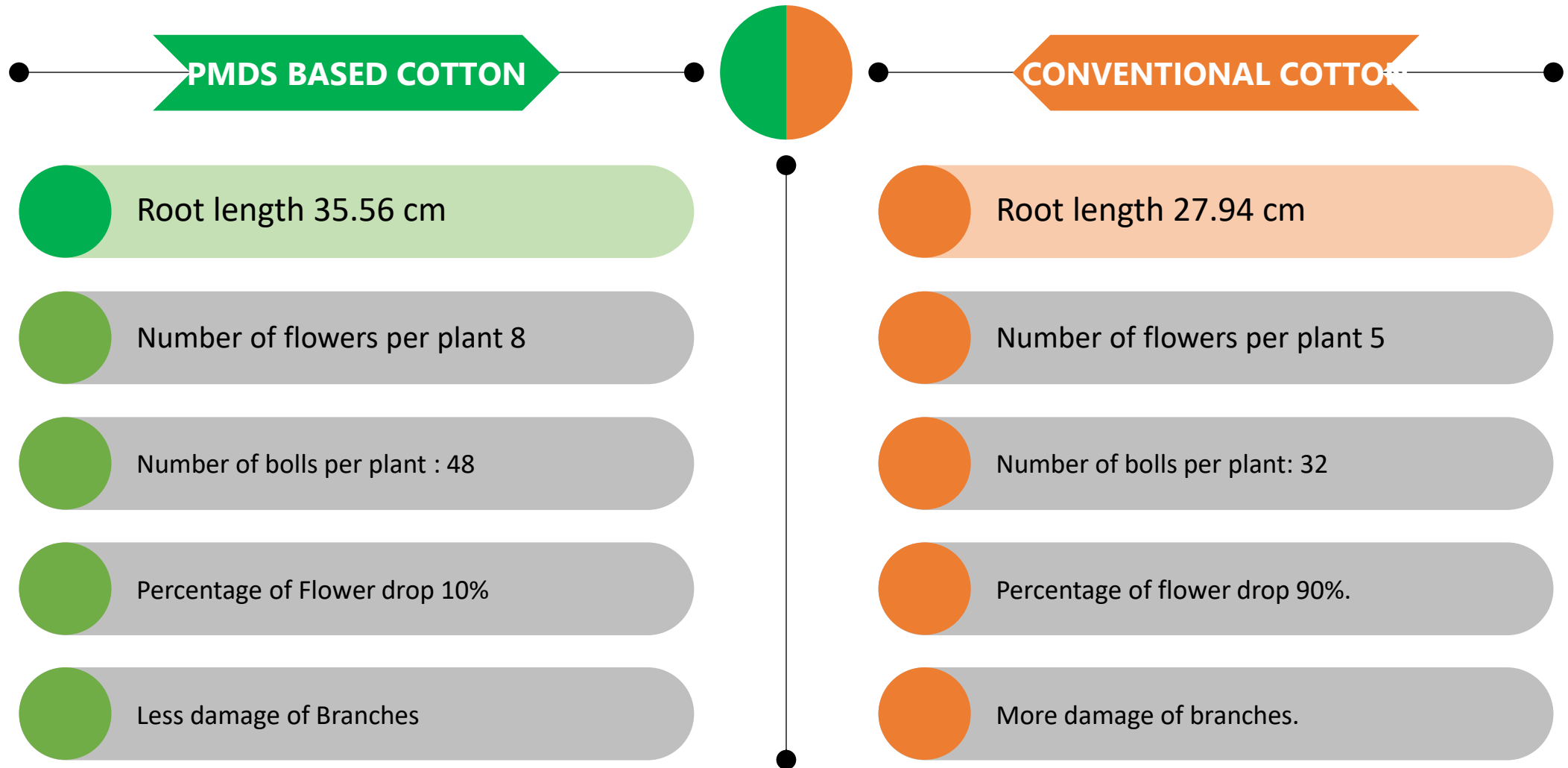
Climate resilience in PMDS+ZBNF and Chemical farms

Cotton and Paddy

Comparison of damage Cotton



PMDS BASED COTTON AND CONVENTIONAL COTTON COMPARISON



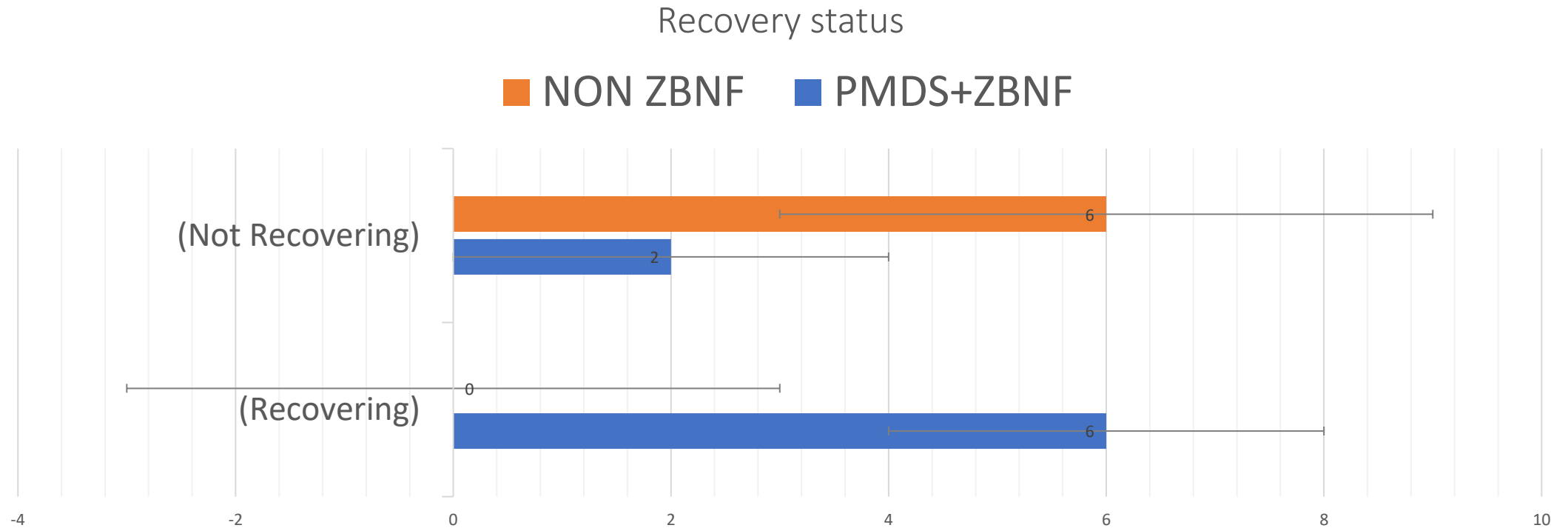
A close-up photograph showing a person's hands holding several cotton bolls. One boll is dark and heavily damaged, with a large hole and exposed internal structure. Another boll is green and appears healthy. The background shows green cotton leaves.

More Boll damage in Conventional Cotton

A photograph of a cotton plant growing in a field. The plant has green leaves and several cotton bolls. One boll is prominently shown in the foreground, appearing healthy and green. The background shows more of the plant and some soil.

Less damage to bolls in PMDS based Cotton

Rain impact on PMDS+ZBNF Cotton and Chemical Cotton



Chi-square analysis

RESULT:.

- From the results we can conclude that crop recovery after heavy rains is more in PMDS+ZBNF fields compared to Conventional fields

	CHI-SQUARE	DF	P-VALUE
Pearson	7.875	1	0.005
Likelihood Ratio	10.124	1	0.001

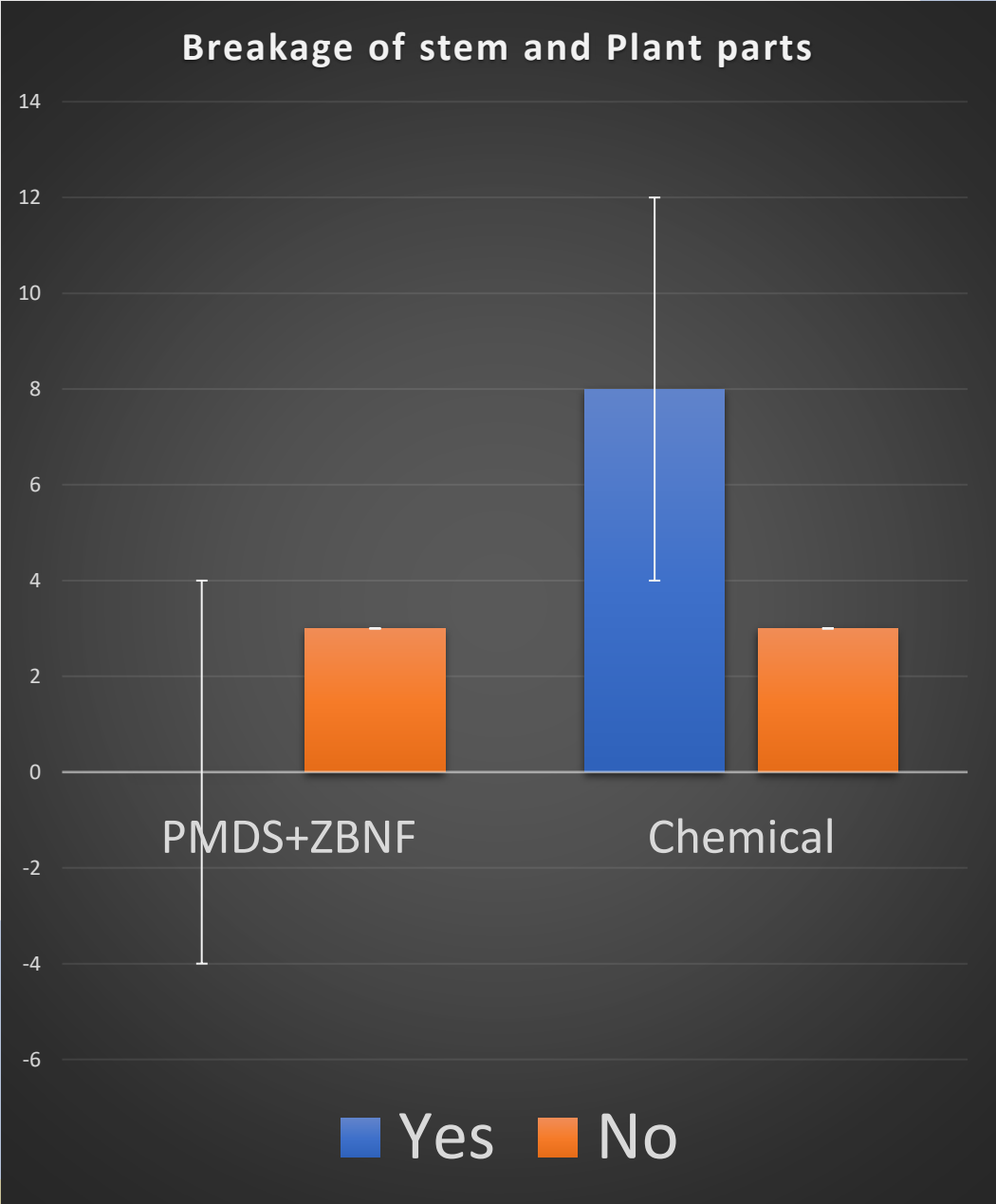


Breakage of stem in
PMDS+ZBNF and
Chemical Cotton

Breakage of stem and Plant parts due to heavy rains

Chi-square test:

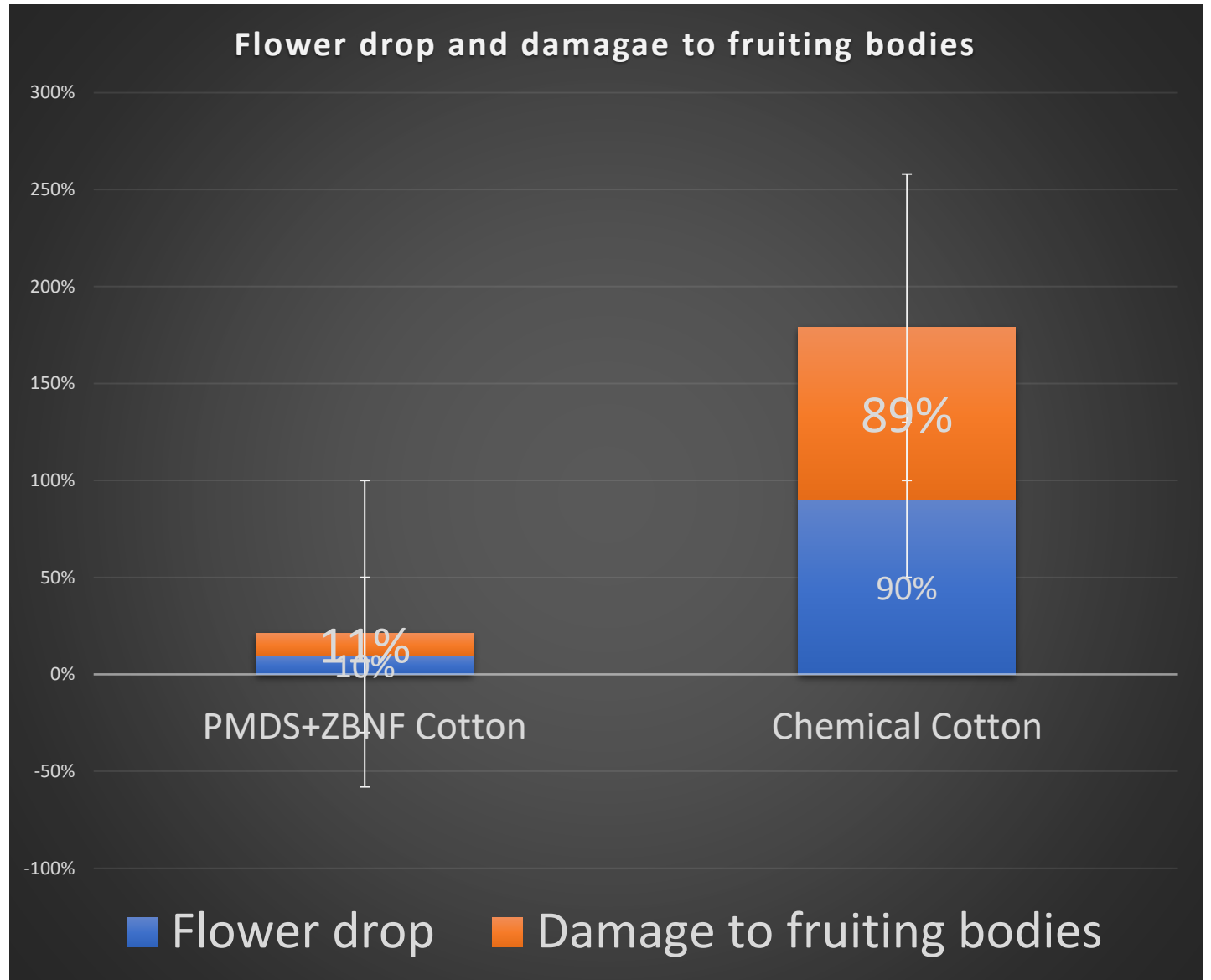
	Chi-Square	DF	P-Value
Pearson	5.091	1	0.024
Likelihood Ratio	6.230	1	0.013



Damage to flowers and fruiting bodies

Chi-Square Test:

	Chi-Square	DF	P-Value
Pearson	7.875	1	0.005
Likelihood Ratio	10.124	1	0.001



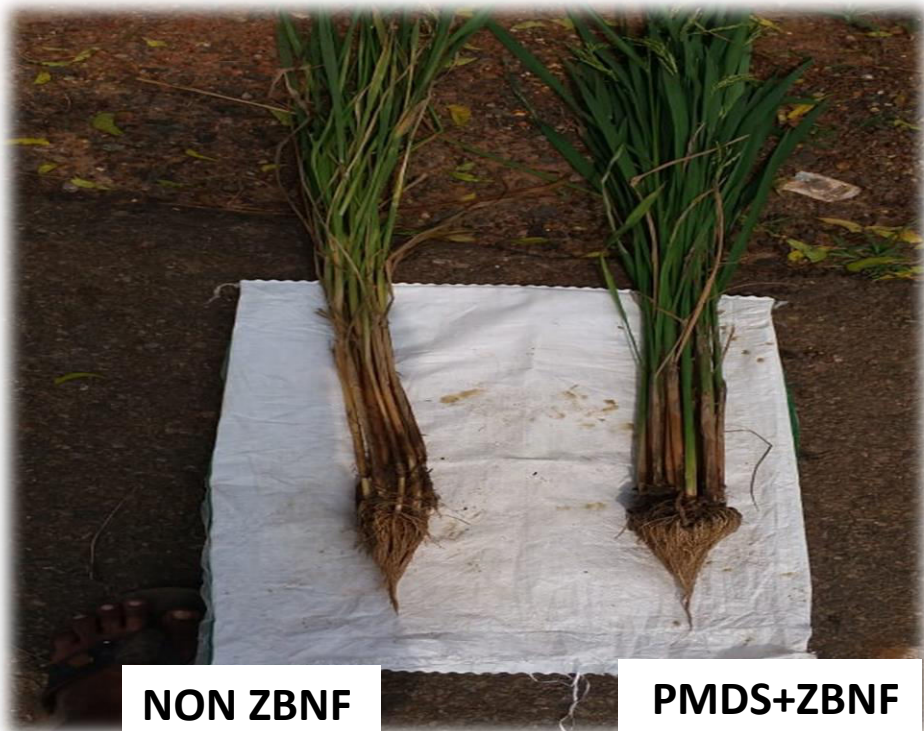
PMDS+Paddy and Chemical
Climate Resilience
Heavy Rains



PMDS+ZBNF



Conventional



NON ZBNF

PMDS+ZBNF



**PMDS+
ZBNF**



NON ZBNF



Present situation of the crop



PMDS+ZBNF



NON ZBNF

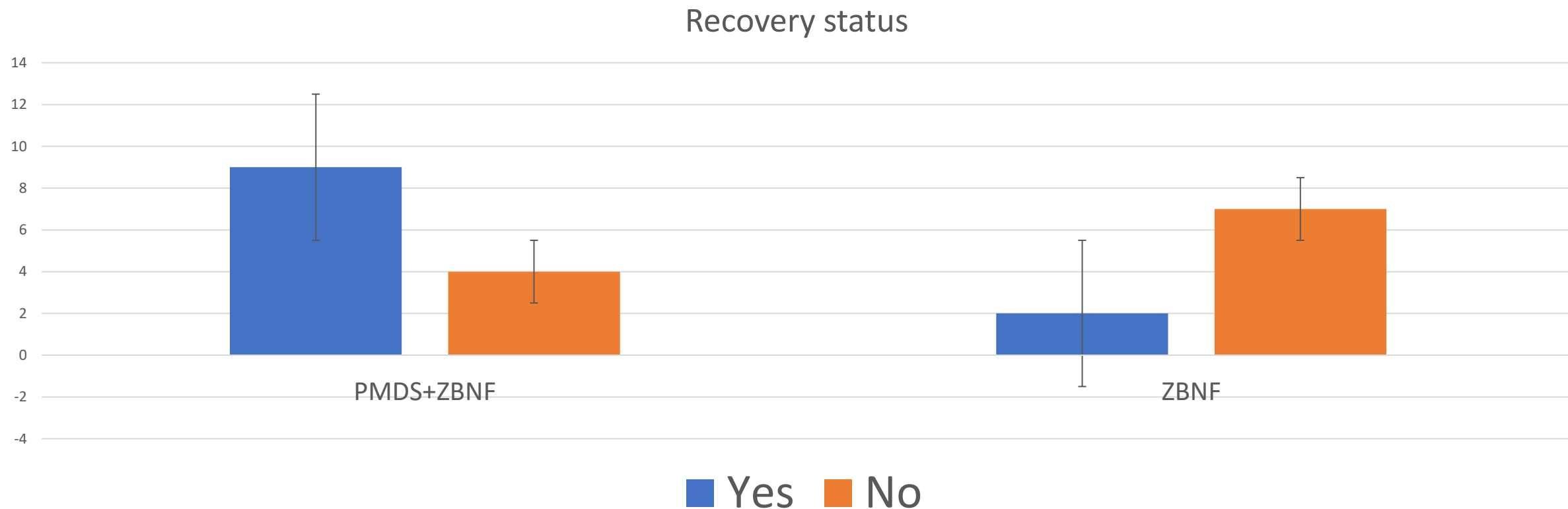
ZBNF paddy

- 5cents land is affected by recent rains, in 2 acres of land.
- Recovery rate is 80-85%
- Zbnf paddy has higher number of tillers compared to chemical field i.e., 26 tillers.
- Good and deep robust root growth.

Non ZBNF paddy

- 50cents of land is affected by recent rains , total land is 1.0 acre.
- Recovery rate- 30-40%
- It has less no. of tillers i.e., 24 , compared to zbnf.
- Weak and shallow root growth.

Recovery status in Paddy



Chi-square Test:

	Chi-Square	DF	P-Value
Pearson	4.701	1	0.030
Likelihood Ratio	4.915	1	0.027

Case from East Godavari

- Deep submergence due to heavy rains in Chemical plots



632
8394
m

1723
33851
m

10 16:32

PMDS + ZBNF PLOT

Powered by NoteCam



Latitude: 17.14163
Longitude: 81.833952
Elevation: 27.83m
Accuracy: 9.0m

Latitude: 17.142041
Longitude: 81.833924
Elevation: 26.82m
Accuracy: 10.0m
Time: 17-10-2020 16:15
Note: icrp kraju

CHEMICAL PLOT

Powered by NoteCam



No pest and disease attack reported from both ZBNF and chemical fields, but Chemical fields were prone to severe lodging effect due to heavy rains and recovery rate was very



Bacterial Leaf Blight Incidence



Lodging in
PMDS and
Chemical plot
Sharat field

PMDS+ZBNF plot

Chemical Plot

